

# LED T8 Tube



## Product information

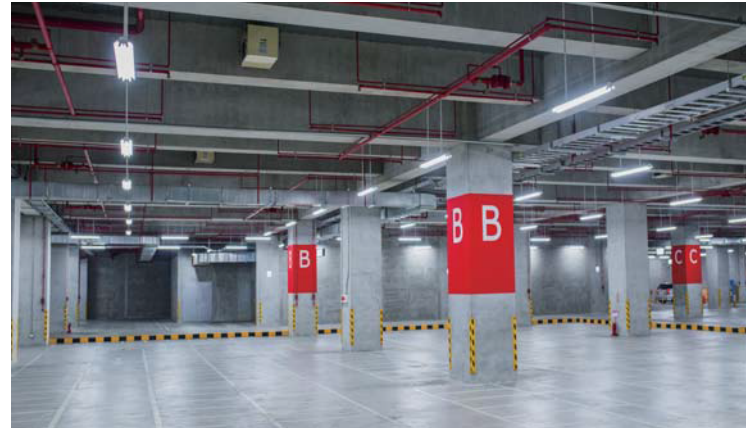
The Syhdee LED T8 plug and play Tube work with existing ballasts, It is easy and safe to install into existing linear fluorescent fixtures without any extra effort or re-wiring. There are no special instructions and no tools are required.

## Features

- \* Direct replacement (ballast compatible/play&plug).
- \* Input Voltage:120-277V depend on ballast .50/60Hz.
- \* CRI(Ra)>80.
- \* Compatible with most electronic instant-start T8 ballasts.
- \* Beam Angle: >120°.
- \* UL/CUL/listed, FCC Compliant.
- \* 50,000 Hrs, 5 years warranty.

## Electrical and Photometric Characteristics

CRI:	≥80
Working temperature range:	-20°C ...+45°C
Starting time:	< 1 s
Color Temperature:	3000K,3500K,4000K, 4500K,5000K
Beam angle:	>120°
Dimmable:	Non-dimmable
IP Rating:	IP20
Base type:	G13



\* Exceeding maximum ratings for operating temperature and input voltage will reduce expected life time or destroy the product.  
All data subject to change without notice. Errors and omission excepted.  
Always make sure to use the most recent release.

## Certifications



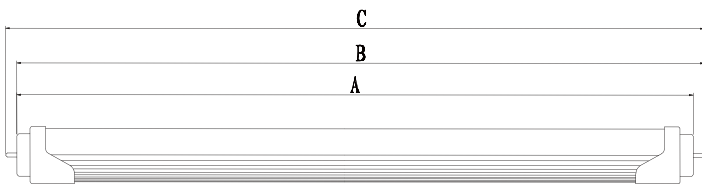
VER#:V1.3.1

# Specifications

Item Number	Rated Wattage (W)	Length (mm)	CCT (Kelvin)	Rated Luminous flux (lm)	CRI (Ra)	Beam angle (Degree)	Pack Qty (Pcs)	Dimming
LED T8 Tube								
SYHU-TT8-010C-60XX(T)	10	600	4000K	1100	>80	>120°	25	No
SYHU-TT8-010C-60XX(F)	10	600	4000K	1150	>80	>120°	25	No
SYHU-TT8-012C-12XX(T)	12	1200	3000K	1600	>80	>120°	25	No
SYHU-TT8-012C-12XX(F)	12	1200	4000K	1630	>80	>120°	25	No
SYHU-TT8-015C-12XX(T)	15	1200	3000K	1750	>80	>120°	25	No
SYHU-TT8-015C-12XX(F)	15	1200	4000K	1800	>80	>120°	25	No
SYHU-TT8-018C-12XX(T)	18	1200	3000K	1980	>80	>120°	25	No
SYHU-TT8-018C-12XX(F)	18	1200	4000K	2160	>80	>120°	25	No
SYHU-TT8-020C-12XX(T)	20	1200	3000K	2200	>80	>120°	25	No
SYHU-TT8-020C-12XX(F)	20	1200	4000K	2300	>80	>120°	25	No

\* All data are related to the entire product  
 Due to the special conditions of the manufacturing processes of LED, the typical data of technical parameters can only reflect statistical figures and do not necessarily correspond to the actual parameters of each single product which could differ from the typical value.  
 For technical information of other CCT, please contact our sales representative.  
 Note: All the item numbers are UL , CUL ,FCC certificated .  
 CCT can be 3000K, 3500K, 4000K, 4500K, 5000K .

## Dimension Diagram



Maximum overall length (mm)	2ft	4ft
A	588	1198
B	595	1205
C	603	1213
<b>Net Weight (Kg)</b>	0.18±0.01	0.32±0.01

## Operation and Maintenance Tips

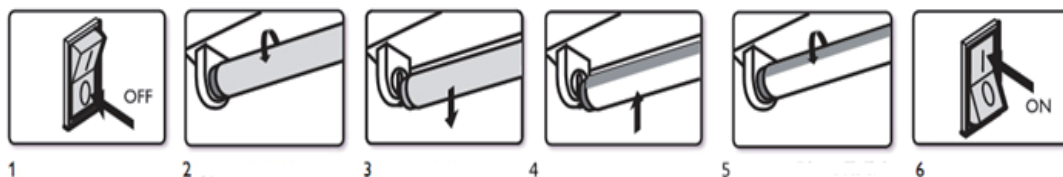
Store and use the lamps as same as standard fluorescent lamps.

- Lamps should be kept free from contamination.
- Switch off mains supply before installing/removing lamp.
- Good condition of the lamp-holder contacts is important to ensure proper operation of lamp.
- For direct wire please check the provided installation instructions.
- Use in fully enclosed fixtures may affect life performance.
- Not for use in emergency lighting circuits.



## Installation Diagram

1. Make sure to turn power off by disconnecting the supply voltage.
2. Remove diffuser (if provided).
3. Remove the conventional fluorescent lamp and dispose of them properly.  
Note: Verify the existing ballast is listed on the sheet of tested ballasts of Syhdee. Verified electrician is needed for rewiring.
4. Plug T8 LED tube into lamp holders.
5. Replace diffuser (if removed in step 2).
6. Turn power on and check the light distribution angle.



## Wiring Diagram



## Package

Item Number	Qty/Carton (Pcs)	Size of Carton LxWxH (mm)	Net Weight (Kg)	Gross Weight (Kg)	Pcs in a 20' GP	Pcs in a 40' HQ
SYHU-TT8-010C-60XX(Y)	25	625x195x195	4.30	5.50	27075	56250
SYHU-TT8-012C-12XX(Y)	25	1235x195x195	7.87	9.86	13825	28700
SYHU-TT8-015C-12XX(Y)	25	1235x195x195	7.87	9.86	13825	28700
SYHU-TT8-018C-12XX(Y)	25	1235x195x195	7.87	9.86	13825	28700
SYHU-TT8-020C-12XX(Y)	25	1235x195x195	7.87	9.86	13825	28700

\* Note: the above quantity full a container based on tubes pack In foam holders+outer carton and without pallets.

