



# High Bay

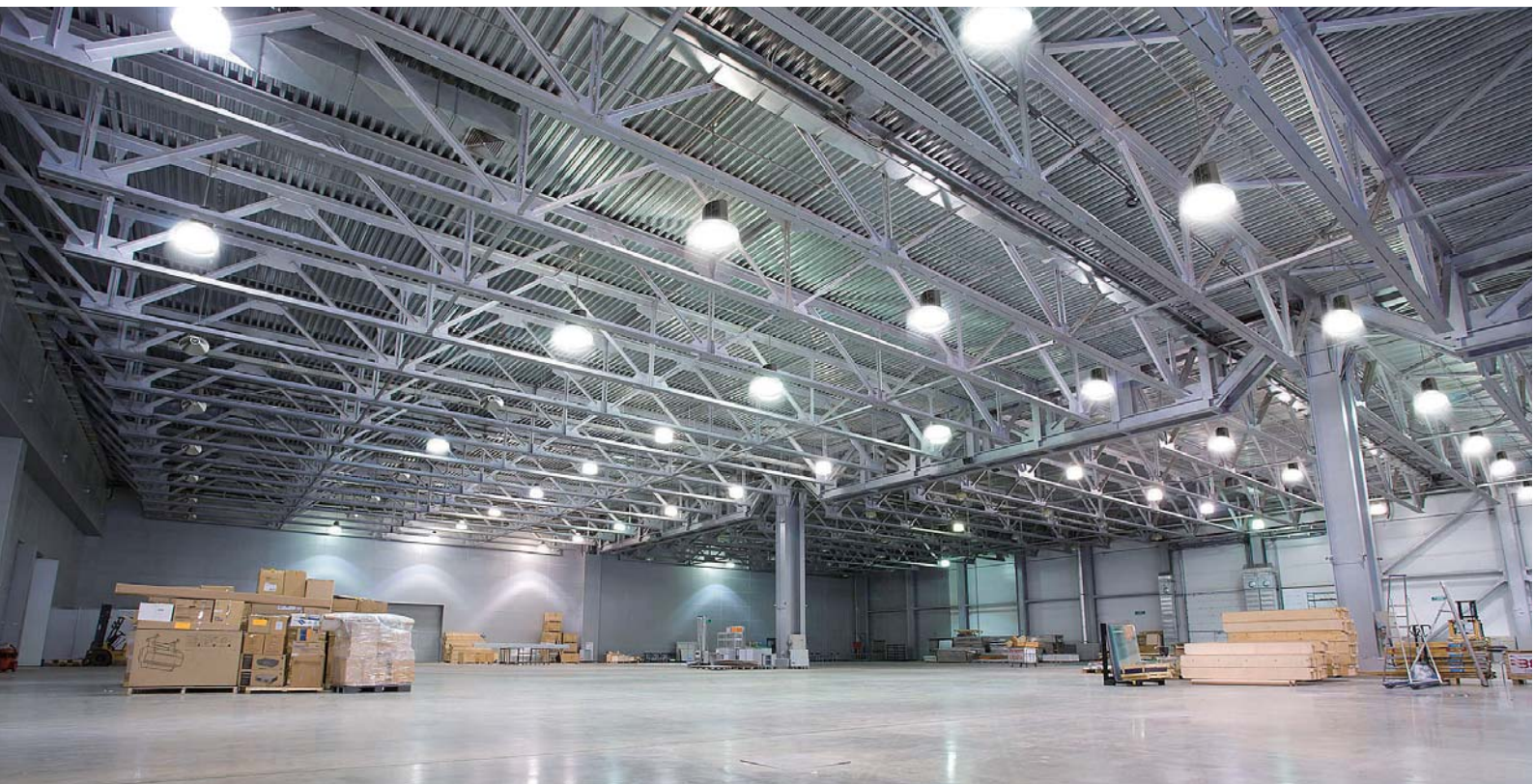
## Features

- Efficacy with 105lm/w, designed to replace 250W and 400W HID while consumes 150W and 200W only
- Optional integrated lens of either 90 or 120degree; or aluminum reflectors of 90degrees
- Hook or Conduit pendant way for different applications
- ON/OFF or Bi-level sensor can be offered for maximizing energy savings
- Superior colour rendition index compared to HPS
- Perfect thermal management supports applications of ambient temp. up to 50°C.
- Resistant to shock and vibration
- UL and DLC pending



## Applications

- Suitable for commercial, retail and institutional applications including gymnasiums, factories and warehouses.



# Specification

Specification/Model	HB140W27V50KMWLDMD	HB150W27V50KMWLDID	HB200W27V50KMWLDMD	HB200W27V50KMWLDID
Input Power	140W	150W	200W	200W
Lumens output	17000lm	17000lm	25000lm	25000lm
Efficacy	121 lm/W	113 lm/W	125 lm/W	125 lm/W
CRI	72			
Color Temperature	5000K			
Input Voltage	120-277VAC			
Driver	MESTER	Inventronics	MESTER	Inventronics
Finish Color	Dark Bronze			
Lens	120 Degree Lens			
Mounting	Fits Pendant mounting and hook mounting directly			
Sensor	Optional for on/off type and bi-level type			

## Ordering Guide

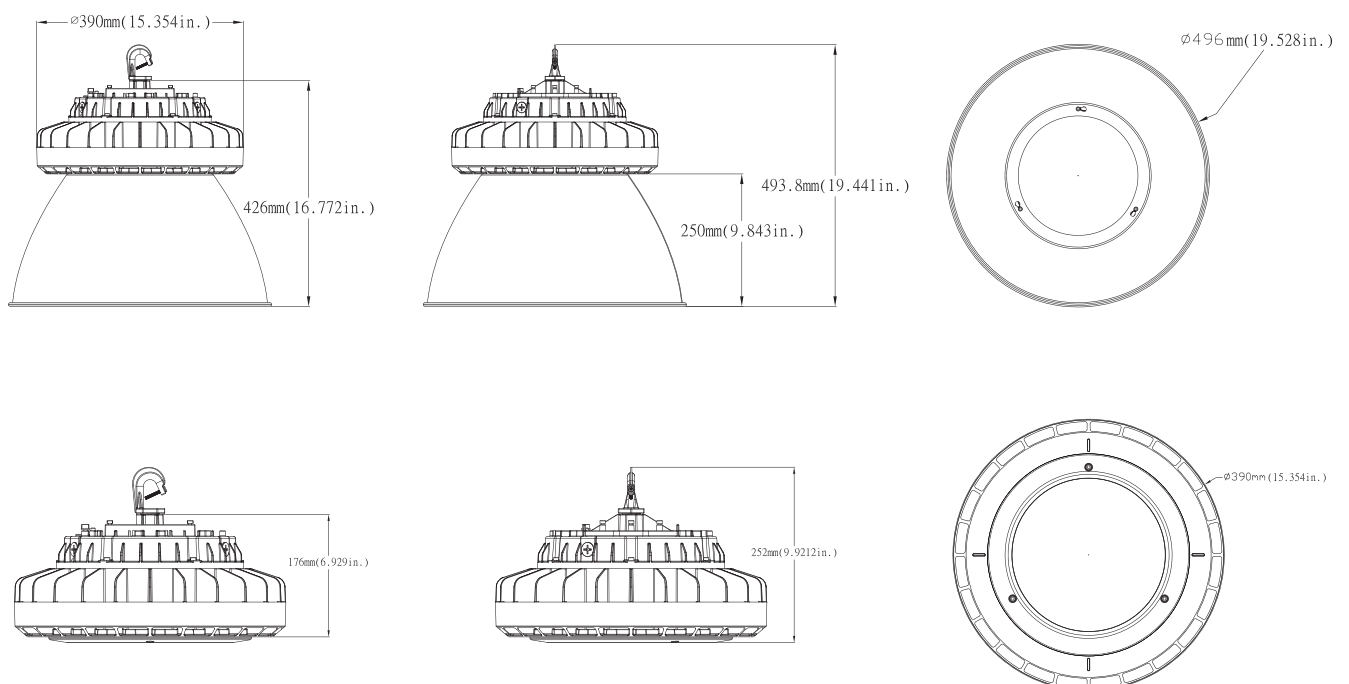
EXAMPLE: HB200W27V50KMWALDMD

Fixture Type	Power Consumption	Input Voltage	CCT	Sensor (Option)	Beam Angle	Reflector	Finish	Driver	Location
HB High Bay	140W 140Watts	27V 120-277V	40K 4000K	M With Sensor	M 90 Degree	AL Aluminum reflector	D Dark Bronze	M MESTER Driver	D Damp location
	150W 150Watts	48V 347V/480V	50K 5000K	Blank Without Sensor	W 120 Degree	L Lens	B Black	I Inventronics Driver	W Wet location
	200W 200Watts								
	210W 210Watts								

Note: 1. 210Watts type is only available for 347V or 480V input voltage.  
2. 140Watts type is only available for Mester driver.

## DIMENSIONS

unit: mm/inch





HB150W48V40KMWLDID	347/480V	High Bay	150	4000	18000	120	50000	72	120°	0.9	YES	Inventronics	YES	UL Pending
HB150W48V50KMWLDID	347/480V	High Bay	150	5000	18000	120	50000	72	120°	0.9	YES	Inventronics	NO	UL Pending
HB150W48V50KMMWLDID	347/480V	High Bay	150	5000	18000	120	50000	72	120°	0.9	YES	Inventronics	YES	UL Pending
HB200W27V40KMMALDID	120-277V	High Bay	200	4000	22000	110	50000	72	90°	0.9	YES	Inventronics	NO	UL Pending
HB200W27V40KMMWLDID	120-277V	High Bay	200	4000	22000	110	50000	72	90°	0.9	YES	Inventronics	YES	UL Pending
HB200W27V50KMMALDID	120-277V	High Bay	200	5000	22000	110	50000	72	90°	0.9	YES	Inventronics	NO	UL Pending
HB200W27V50KMMWLDID	120-277V	High Bay	200	5000	22000	110	50000	72	90°	0.9	YES	Inventronics	YES	UL Pending
HB210W48V40KMMALDID	347/480V	High Bay	210	4000	22000	105	50000	72	90°	0.9	YES	Inventronics	NO	UL Pending
HB210W48V40KMMWLDID	347/480V	High Bay	210	4000	22000	105	50000	72	90°	0.9	YES	Inventronics	YES	UL Pending
HB210W48V50KMMALDID	347/480V	High Bay	210	5000	22000	105	50000	72	90°	0.9	YES	Inventronics	YES	UL Pending
HB210W48V50KMMWLDID	347/480V	High Bay	210	5000	22000	105	50000	72	90°	0.9	YES	Inventronics	NO	UL Pending
HB200W27V40KMLDID	120-277V	High Bay	200	4000	25000	125	50000	72	90°	0.9	YES	Inventronics	NO	UL Pending
HB200W27V40KMWLDID	120-277V	High Bay	200	4000	25000	125	50000	72	90°	0.9	YES	Inventronics	YES	UL Pending
HB200W27V50KMLDID	120-277V	High Bay	200	5000	25000	125	50000	72	90°	0.9	YES	Inventronics	NO	UL Pending
HB200W27V50KMWLDID	120-277V	High Bay	200	5000	25000	125	50000	72	90°	0.9	YES	Inventronics	YES	UL Pending
HB210W48V40KMLDID	347/480V	High Bay	210	4000	25000	119	50000	72	90°	0.9	YES	Inventronics	NO	UL Pending
HB210W48V40KMWLDID	347/480V	High Bay	210	4000	25000	119	50000	72	90°	0.9	YES	Inventronics	YES	UL Pending
HB210W48V50KMLDID	347/480V	High Bay	210	5000	25000	119	50000	72	90°	0.9	YES	Inventronics	NO	UL Pending
HB210W48V50KMWLDID	347/480V	High Bay	210	5000	25000	119	50000	72	90°	0.9	YES	Inventronics	YES	UL Pending
HB200W27V40KWLID	120-277V	High Bay	200	4000	25000	125	50000	72	120°	0.9	YES	Inventronics	NO	UL Pending
HB200W27V40KMWLDID	120-277V	High Bay	200	4000	25000	125	50000	72	120°	0.9	YES	Inventronics	YES	UL Pending
HB200W27V50KWLID	120-277V	High Bay	200	5000	25000	125	50000	72	120°	0.9	YES	Inventronics	NO	UL Pending
HB200W27V50KMWLDID	120-277V	High Bay	200	5000	25000	125	50000	72	120°	0.9	YES	Inventronics	YES	UL Pending
HB210W48V40KWLID	347/480V	High Bay	210	4000	25000	119	50000	72	120°	0.9	YES	Inventronics	NO	UL Pending
HB210W48V40KMWLDID	347/480V	High Bay	210	4000	25000	119	50000	72	120°	0.9	YES	Inventronics	YES	UL Pending
HB210W48V50KWLID	347/480V	High Bay	210	5000	25000	119	50000	72	120°	0.9	YES	Inventronics	NO	UL Pending
HB210W48V50KMWLDID	347/480V	High Bay	210	5000	25000	119	50000	72	120°	0.9	YES	Inventronics	YES	UL Pending

Note: D\* Dark Bronze finish color is inventory color, please consult factory for lead time if other color is needed.

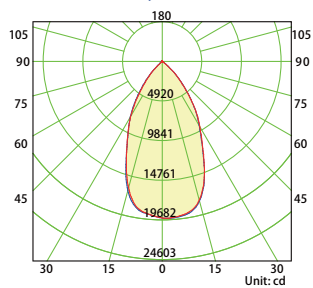
## Energy Saving Replacement

MESTER MODEL	Replacing
HB140W27VXXKYYYYYY, HB150W27VXXKYYYYYY HB150W34VXXKYYYYYY	250W HID
HB200W27VXXKYYYYYY, HB210W34VXXKYYYYYY	400W HID

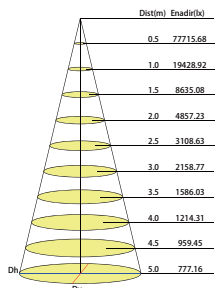
## Photometrics

### HB150W27V50KMWLDID

#### Luminous Intensity Distribution Curve

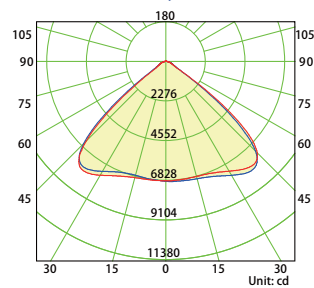


#### Illuminance at a Distance

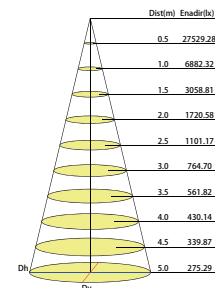


### HB150W27V50KWLID

#### Luminous Intensity Distribution Curve

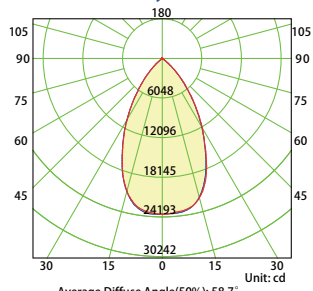


#### Illuminance at a Distance

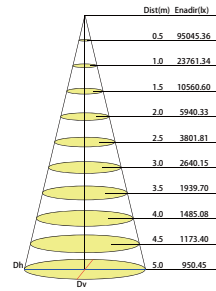


### HB200W27V50KMWLDID

#### Luminous Intensity Distribution Curve

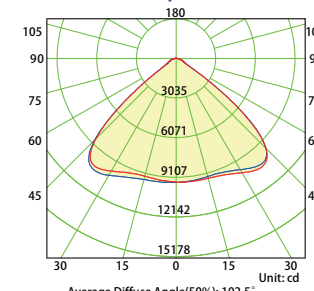


#### Illuminance at a Distance

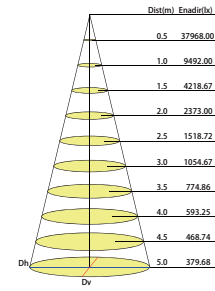


### HB200W27V50KWLID

#### Luminous Intensity Distribution Curve



#### Illuminance at a Distance



## MESTER LED LIMITED

3rd F, section B, Building A, Sunshine Industrial Park, Hezhou, Xixiang, Bao' an District, Shenzhen China.

www.szmester.com

